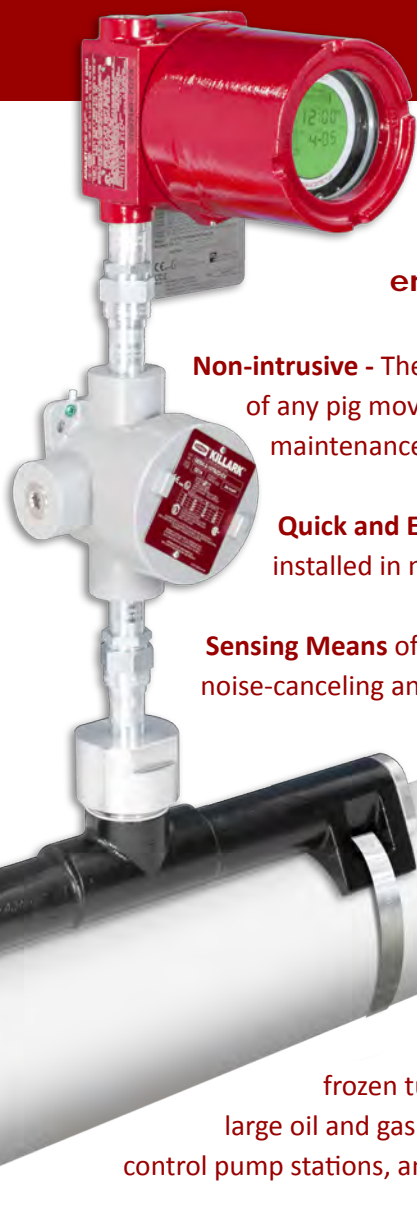


CD52 Bandit

Non-intrusive Magnetic Pig Passage Signaler



FOR OVER TEN YEARS, THE CD52 BANDIT has meant simple, reliable, and durable pipeline pig passage detection in the world's most demanding environments.

Non-intrusive - The CD52 Bandit provides quick and easy non-intrusive pig passage detection of any pig moving between 0.01 and 20 meters per second. Non-intrusive means less maintenance and corrosion, and no possibilities of pipeline leaks.

Quick and Easy Installation - No hot-tapping required. The CD52 Bandit can be installed in minutes by any field technician.

Sensing Means of the CD52 Bandit consist of a set of patented, non-intrusive proprietary noise-canceling antennas invented by CDI specifically for pig passage detection. This antenna system gives the Bandit its ability to reject nearby magnetic noise and halt costly false-positive triggering. A small, safe, permanent magnet or active transmitter installed on a pig is all it takes to put the Bandit to work!

Field Proven - We have been manufacturing our patented CD52 family of pig signalers for a decade. With thousands of systems installed around the globe, the CD52 family has a reliable performance record in burning deserts, frozen tundras, and every environment in between. Many of our customers are large oil and gas producers who rely upon the CD52 family of equipment to set valves, control pump stations, and communicate with SCADA systems.

Remote Signaling of a passage is easy with a built-in flashing LCD visual display and dry-contact relays. These normally-open or normally-closed relays may be used in conjunction with existing SCADA systems to integrate the CD52-Bandit into a pipeline control and signaling network. An optional array of four high-luminosity LEDs (shown here) can be seen over distances as great as 100 meters (328 feet).



www.pigging.com
(918) 258-6068
sales@pigging.com



PIGGING PRODUCTS & SERVICES ASSOCIATION
member

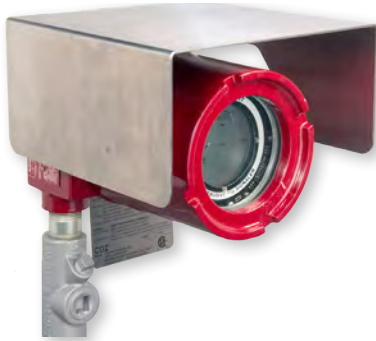


CD52 Bandit Non-intrusive Magnetic Pig Passage Signaler

Line or Battery Power - The Bandit may be line or battery powered for greatest flexibility. Two standard D-Cell alkaline batteries provide a full year of service, or 24VDC power may be used for indefinite operation. Changing batteries is as simple as opening the cabinet, unscrewing the face of the unit, removing the old batteries, and inserting new ones.



Stainless Steel Sunshade helps protect the Bandit from intense sunlight by reducing overall temperature inside, thus prolonging the life of the electronic components. 316 stainless steel construction guarantees long life in a harsh pipeline environment.



Conduit connections are standard 3/4-in. NPT or M20 metric connections.



Easily bands to pipelines from 2 in. to 60 in. (50–1,524 mm) diameter.

OPERATIONAL SPECIFICATIONS

Operational Principle:	Non-Intrusive Passive Magnetic
Sensor:	Noise-Canceling Wire-wound Antennas
Travel Direction:	Bi-Directional
Devices Detected:	Permanent Magnet or Electromagnetic Transmitter (CD42 Transmitters or CD52 Permanent Magnets recommended)
Detection Speed:	0.01 meter/sec to 20 meter/sec
Passage Visual Indicator:	LCD blinks one hour after passage LCD holds steady for next 11 hours Auto-Resets at 12 hours
Passage Electrical Indicator:	Isolated Dry Contact Closure Relays
Pipeline Diameters:	3/4 in. to 60 in. (19 mm to 1524 mm)
Pipe Wall Thickness:	1.5 in. (38.1 mm) Maximum* * Where pipe wall thickness exceeds 1 in. (25.4 mm) a custom magnet may be required. Please Consult CDI for an evaluation of deployment options.

POWER SPECIFICATIONS

Source:	Two 1.5 VDC Alkaline D-Cell Batteries** or 24VDC External Power **DURACELL® PROCELL (PC1300) D-Cell alkaline batteries required by ATEX and/or IECEx standards to maintain system certification
Battery Life:	One Full Year Minimum

CONSTRUCTION

Housing:	Aluminum (standard) or optional marine-coated 316L Stainless Steel
Window:	Tempered Glass

OPTIONS

Sun Shade:	Protection from intense sunlight
Heater System:	Recommended for operation below -22°F (-30°C)
LineStat:	Satellite Radio for transmitting passage time, date, and GPS location via email or SMS message
Remote Indicator System (RIS):	Provides visual passage indication up to 328 ft (100 m)

SYSTEM CERTIFICATIONS

CD52-Bandit is available with either ATEX/IECEx or CSA-UL certifications

ATEX  SIRA 13ATEX 1381
II 2G Ex d mb IIB T5 Gb IP66

IECEx  IECEx CSA 13.0039/00
Ex d mb IIB T5 Gb IP66

CSA-UL  CSA-UL Standard C22.2 No.30
rated for Class 1 Division 1

BANDIT VARIANTS

STANDARD



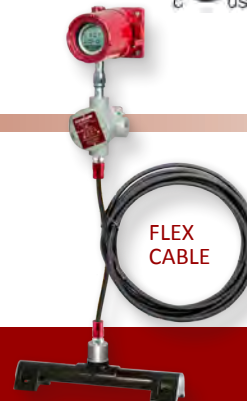
PORTABLE



PIPE EXTENSION



FLEX CABLE



PORTABLE STAINLESS STEEL



When you can't reach the pipeline, reach for the FLEX CABLE

Limited or Restricted Pipeline Access is no problem when your CD52 Bandit is configured with our special armored flex cable.

Available in lengths up to 100 ft [30.5 m], the flex cable may be deployed above or below ground, anywhere an offset antenna installation is called for. Flex cable configuration is available for ATEX-IECEX and CSA-UL certified models, and for both standard and stainless steel antennas.



Typical Flex Cable signaling applications

- deep trench pipelines
- overhead pipelines
- inaccessible or rough terrain
- refinery/platform manifolds
- high-security or hazardous areas



www.pigging.com
(918) 258-6068
sales@pigging.com



**PIGGING PRODUCTS &
SERVICES ASSOCIATION**
member

