

SPY® IN-PLANT HOLIDAY DETECTORS



CE

SPY®
PIPELINE INSPECTION COMPANY

MODELS 115 • 125 • 135

For Heavy-Duty or Continuous Operation in Coating Plants and Yards

MODEL 115

1,000–5,000 KV DC • 4–50 MILS
FOR FBE THIN FILM COATINGS.

Output voltage is infinitely adjustable from one to five kilovolts. Normal output voltage is direct current (DC) unless moisture is detected on the pipe. When moisture is detected, output voltage automatically switches to pulse type output voltage for optimum results.

MODEL 125

5,000–25,000 KV PULSE • 16–400 MILS
FOR TAPE, EXTRUDED AND COAL TAR TYPE COATINGS.

For thicker coatings the Model 125 has fully adjustable output voltage from 5-25 kilovolts. For very demanding conditions, a sensitivity switch offers additional control.

MODEL 135

10,000–35,000 KV PULSE • 64–750 MILS
FOR SOME TAPE, EXTRUDED AND COAL TAR AND EVEN THICKER SOMASTIC TYPE COATINGS.

For a wider Kilovolt Pulse range with a maximum output voltage to handle even thicker coatings the Model 135 has fully adjustable output voltage from 10,000 to 35,000 KV.

State-of-the-art holiday detectors, in a sturdy case, with an easy-to-read, easy-to-use control panel and heavy-duty three wire power cord. A loud klaxon horn, that can be heard above normal plant noise, and a spring electrode wand with twenty feet of high voltage cable complete the system.

LEADING-EDGE CIRCUITRY

Almost eliminates maintenance and downtime.

OPERATES ON STANDARD 120 VAC

No batteries are required. Optional 230 VAC/115VAC Step Down Transformer available.

OUTPUT VOLTAGE

Automatically regulated for 2" to 60" pipe sizes.

PERMANENT OR SEMI-PERMANENT INSTALLATION

Extremely versatile for automatic or manual operation.

INTERNAL HEATER

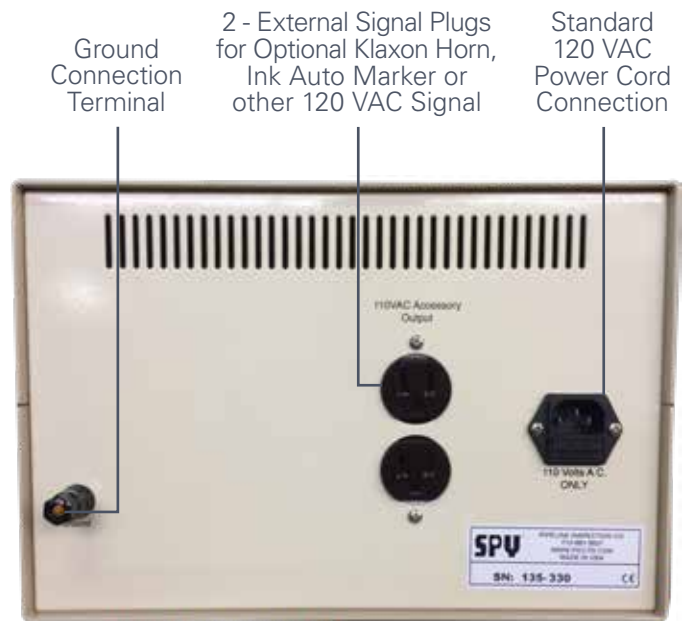
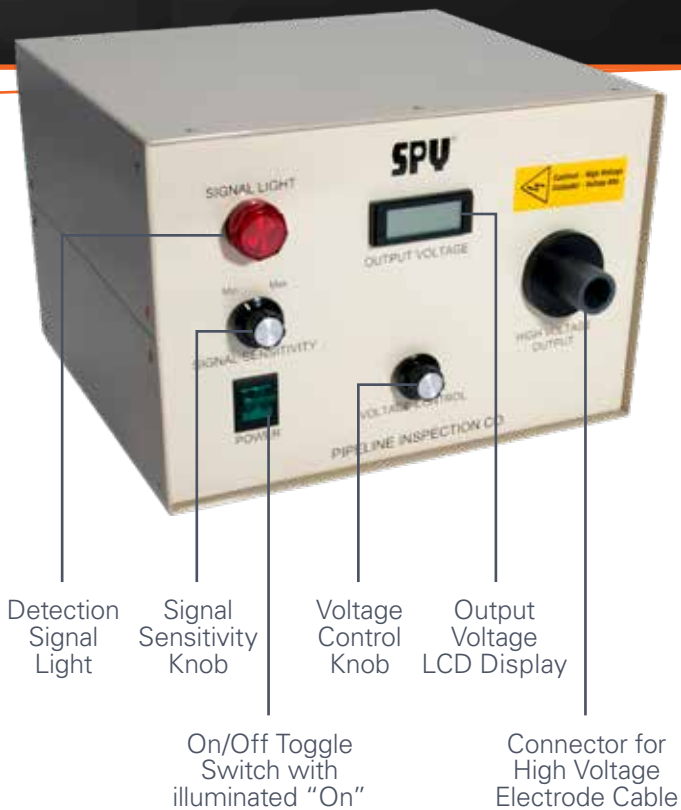
Prevents moisture build-up when the unit is not in use.

KIT INCLUDES:

- 1 - In-Plant Holiday Detector
- 1 - Klaxon Horn
- 1 - 25 ft Spring/Brush Wand with Brush Kit
- 1 - Operating Instructions



MODELS 115 • 125 • 135



SPECIFICATIONS

MODEL	115	125	135
Voltage Type	DC	Pulse	Pulse
Voltage Range (kV)	1-5 kV	5-25 kV	10-35 kV
Voltage Output Accuracy	±5%	±5%	±5%
Coating Range (Min-Max)	4 - 50 mils	16 - 400 mils	64 - 750 mils
Pulse Repetition Rate	N/A	28 Hz	28 Hz
Operating Temperature	-40°F to 148°F	-40°F to 148°F	-40°F to 148°F
Internal Volt Meter	YES	YES	YES
Display Type	LCD	LCD	LCD
Holiday Indicator Type	Audible/Visual	Audible/Visual	Audible/Visual
Power Requirement	120V AC (Optional 220V to 120V transformer)	120V AC (Optional 220V to 120V transformer)	120V AC (Optional 220V to 120V transformer)
Unit Weight w/ Battery Only	9.2 lbs	9.6 lbs	9.7 lbs
Unit Dimensions (LxWxH)	12" x 13" x 8.5"	12" x 13" x 8.5"	12" x 13" x 8.5"
Domestic / International Standards Unit Complies With	CE, NACE SP0490-2007, NACE SP0188-2006, TM0186-2002	CE, NACE SP0274-2011	CE, NACE SP0274-2011
Factory Warranty	12 Month	12 Month	12 Month

ELECTRODE TYPES

FOR SPRING ELECTRODES
the connector has a sealed ball bearing
in the end to allow the electrode to roll freely.

FOR BRUSH & OTHER TYPE ELECTRODES
the connection is a simple wing nut.



Half-Circle Brush*
AVAILABLE IN BRASS, STEEL
OR NEOPRENE
2"- 60"(50.8 MM-1524 MM)



Flat Brass Brush
1"- 72"(25 MM-1829 MM)



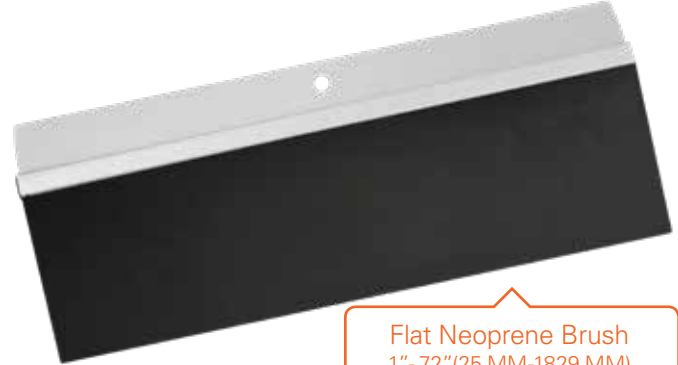
Full-Circle Brush*
AVAILABLE IN BRASS, STEEL
OR NEOPRENE
2"- 60"(50.8 MM-1524 MM)



Flat Steel Brush
1"- 72"(25 MM-1829 MM)



Internal Brush**
AVAILABLE IN NEOPRENE
2"-60" (50.8 MM-1524 MM)



Flat Neoprene Brush
1"- 72"(25 MM-1829 MM)



Full-Circle Steel Spring***
2"- 80"(50 MM- 2032 MM)

**Custom size electrodes are always available.
Contact our sales staff to discuss your specific
electrode needs.**

* Sizes above 12" are built with wheels for support.
** Sizes above 15" are built with support wheels, sizes 12"-14" are built with Teflon guides.
*** Springs 54" and above are recommended to use a pusher wand due to potential spring sag (Part #11935)

ACCESSORIES

Optional equipment available includes a wide assortment of electrodes, a brush-type electrode, a marker system, a 240/120 step-down transformer and high voltage trolley cable assembly.



INK AUTO MARKER SYSTEM
ITEM #14202



KLAXON HORN
ITEM #12513



STEP-DOWN TRANSFORMER
ITEM #14213



WIRE TROLLEY SYSTEM
ITEM #11936



SPRING/BRUSH WAND WITH 25-100 FT HIGH VOLT CABLE
ITEMS #12769 (25'), #13574 (50'), #13460 (85'), #13090 (100')

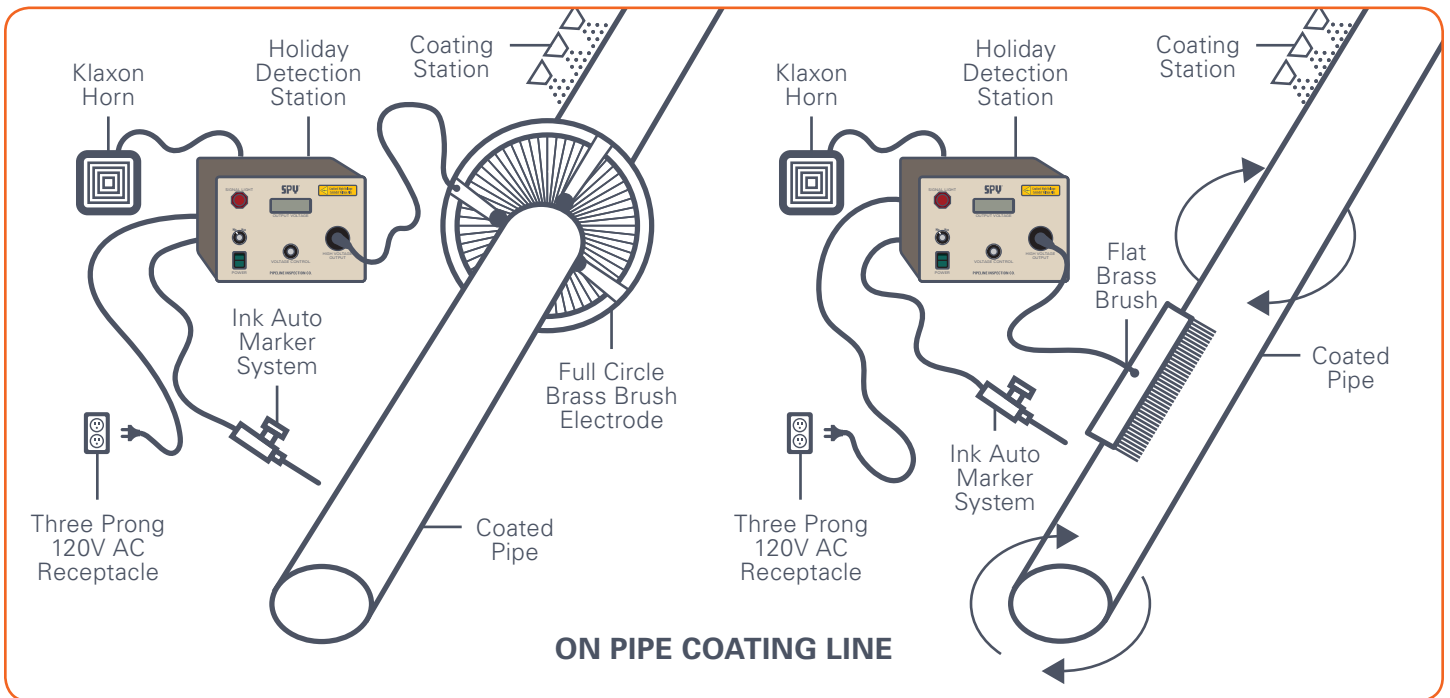


HIGH-VOLT CABLE (25 – 150 FT)
ITEMS #13813 (25'), #12659 (50'), #13504 (100'), #13719 (150')

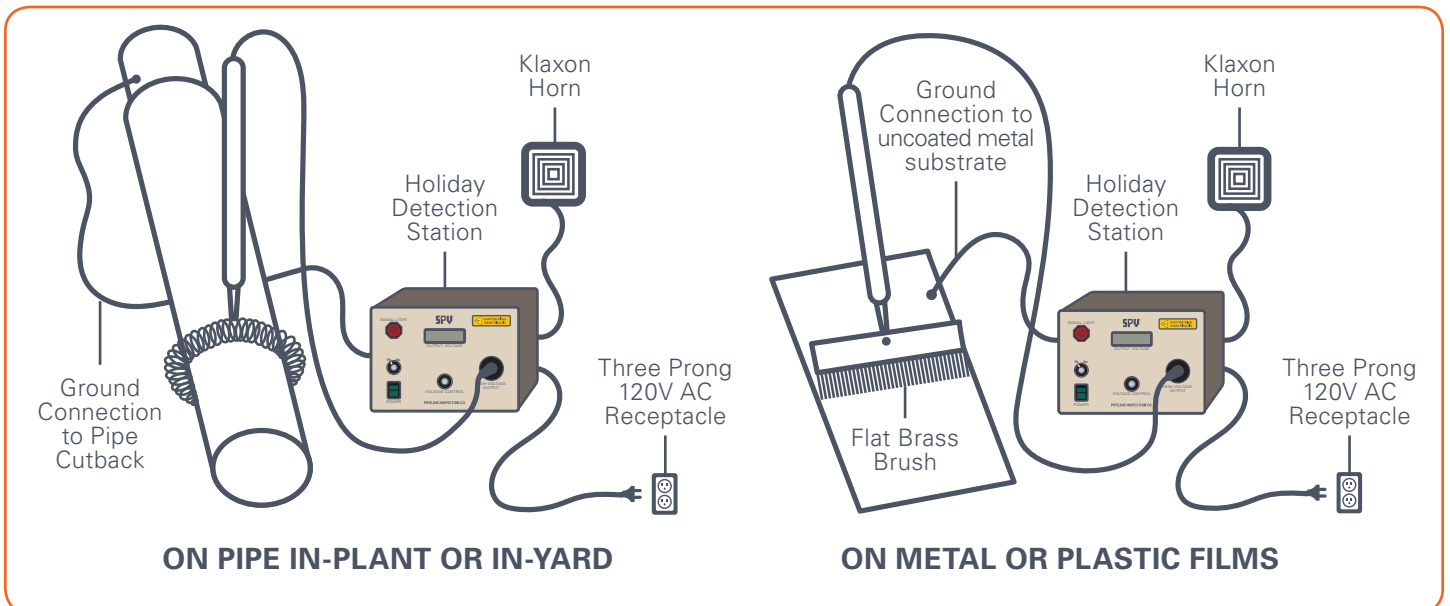
TYPICAL OPERATIONAL SETUPS

IT IS VERY IMPORTANT THAT THE SYSTEM BE PROPERLY GROUNDED BY EITHER PLUGGING INTO A THREE-PRONG 120 VOLT AC RECEPTACLE AND/OR CONNECTING A PIPE GROUND TO THE DETECTOR CASE

AUTOMATIC INSPECTION



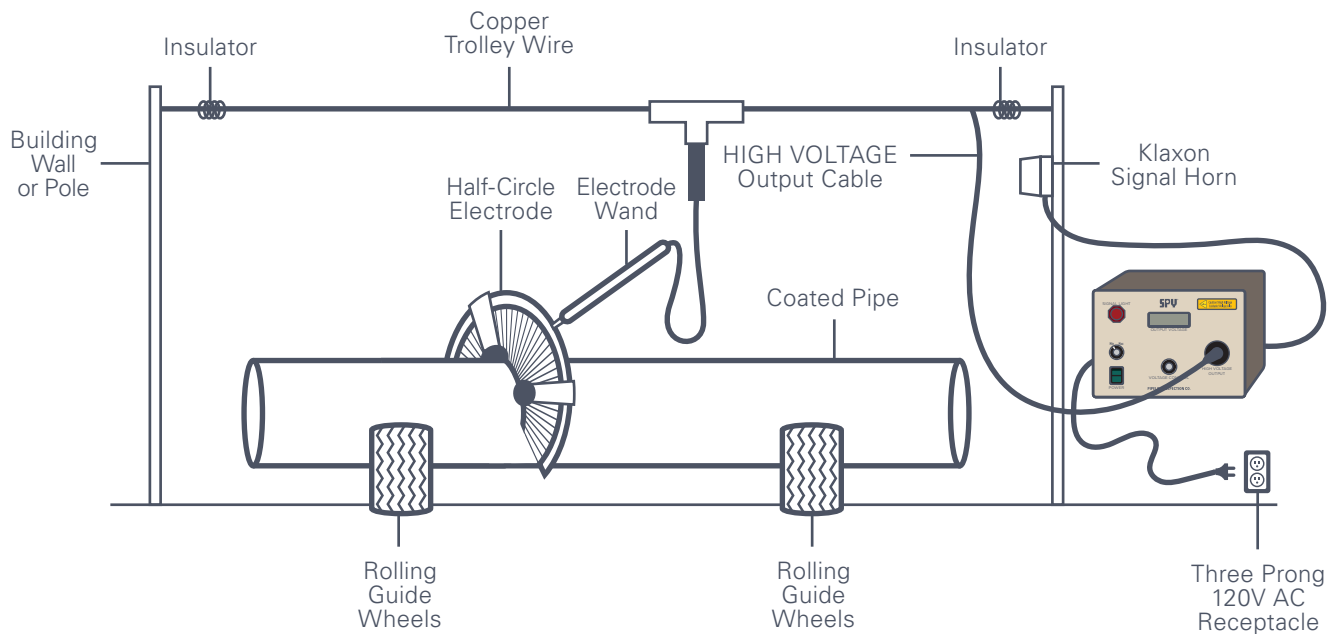
MANUAL INSPECTION (CAN BE DONE USING ANY TYPE OF SPY ELECTRODE)



TYPICAL OPERATIONAL SETUPS

IT IS VERY IMPORTANT THAT THE SYSTEM BE PROPERLY GROUNDED BY EITHER PLUGGING INTO A THREE-PRONG 120 VOLT AC RECEPTACLE AND/OR CONNECTING A PIPE GROUND TO THE DETECTOR CASE

MANUAL INSPECTION OVERHEAD TROLLEY WIRE



TROLLEY SYSTEM CAN BE USED WITH ANY TYPE OF SPY® ELECTRODE AND TROLLEY WIRE CAN BE CUSTOM MADE TO ANY LENGTH NEEDED.



SPY[®]

PIPELINE INSPECTION COMPANY



WORLDWIDE AVAILABILITY

Pipeline Inspection Company has a worldwide distributor network to ensure that SPY[®] products are available where and when they are needed.

SEE OUR COMPLETE PRODUCT LINE AT PICLTD.COM

PHYSICAL ADDRESS:
1919 Antoine Dr.
Houston, Texas 77055

MAILING ADDRESS:
P.O. Box 55648
Houston, Texas 77255-5648

PHONE: 713-681-5837

FAX: 713-681-4838